




CULTURES CONNECTING

DIVERSITY CALENDAR

2025-2026



MISSION STATEMENT

The purpose of this calendar is to address and support the diversity of students, staff, and families in K-12 education settings and beyond. We recognize that by increasing our understanding of diverse cultures, group experiences, traditions, values and beliefs, we can enhance our relationships with one another and hence, create culturally responsive environments where everyone feels valued and respected.

HOW DATES WERE CHOSEN

Due to the extensive number of cultural holidays, dates for this calendar were determined by the following four criteria:

1. Might a student or staff member be absent as a result of this day?
2. Might a student or staff member be disengaged as a result of this day (e.g., hunger or a negative association with a particular day/date such as Thanksgiving, or a day of remembrance of a tragic event)?
3. Might a student, family, or staff member not be able to participate in a school activity during or after school as a result of this day? (e.g., Many of our students do not participate in Halloween or Valentine's Day. There are students, families, and staff who cannot participate in district/school events that are scheduled on the evening of an important religious day observed by the Jewish and Muslim communities).
4. Does the day provide an opportunity for a teachable moment regarding ethnic or cultural diversity that might not otherwise be discussed, particularly dates associated with a continued history of oppression, discrimination, or racism?



WORK IN PROGRESS

We ask for your patience in the event that we have missed important dates that apply to the four criteria above. This was an enormous task taken on by a handful of individuals of good will and intention. If you know of additional cultural holidays that meet the above criteria, or would like to offer suggestions for appropriate websites, books, or other resources that can be used to improve this calendar, please contact: Judy Lee at judy.lee@culturesconnecting.com.

ACKNOWLEDGEMENTS:

This calendar began as a project of Seattle Public Schools. We would like to thank the following contributors that made this Diversity Calendar possible.

SPECIAL THANKS

- Bilingual Instructional Assistants, SPS
- Willard Bill, Jr., Huchoosedah
- Anita Morales, Instructional Services
- Shannon McMinimee, Legal Office
- Keisha Scarlett, STAR Consultant
- Mohamed Roble, Bilingual Community Liaison
- Ilsa Govan, Equity & Race Specialist
- Judy Lee, Cultures Connecting

COMMITTEE MEMBERS

- Caprice D. Hollins, Cultures Connecting
- Hung Pham, Bilingual & Community Liaison
- Shelly Rosen, SPS Parent
- Carl Shutoff, Instructional Technology Resource Teacher



NOTES:

- Starred (*) holy days begin at sunset of the date listed and go to sunset of the following day.
- Caret (^) indicates work restrictions.
- Due to regional and cultural differences, the holidays listed may be celebrated on different dates by individuals of the same faith.
- Many of the holidays are based on actual sighting of the moon and therefore the date may vary.
- For more information on individual holidays, click the holiday title to view its hyperlink (many are linked to Wikipedia).
- Please note that some months have two pages.



AUGUST 2025

Intersectionality Awareness Month



FRI

1

Lughnasadh
(Lammas)

Neo-Pagan

SAT-SUN

2-3

Tisha B'Av

Jewish



SAT

9

International Day
of the World's
Indigenous
People

International

TUE

12

International
Youth Day

International

SAT

9

Raksha
Bandhan

Hindu

WED-SAT

13-16

Obon

Japanese
Buddhist



SAT

16

Krishna
Janmashtami

Hindu

TUE

19

World
Humanitarian
Day

International

TUE

26

Women's
Equality
Day

United States

Notes:

*Holy days begin at sunset of the date listed and go to sunset of the following day.

SEPTEMBER 2025

Hispanic, Latino, and Latinx Heritage Month



| | | | |
|--|--|---|--|
| MON 1 <u>Labor Day</u> United States No School | THU-FRI 04-05 <u>Eid-e-Milad/ Mawlid al-Nabi</u> Islam | THU 11 <u>Enkutatash (New Year)</u> Ethiopian | MON 15 <u>Central American¹ Independence Day</u> Central American |
| TUE 16 <u>Mexican Independence Day</u> Mexican | THU-FRI 18-19 <u>Fiestas Patrias/ Independence Day</u> Chilean | SAT-FRI 20-26 <u>International Week of the Deaf</u> International | SUN 21 <u>International Day of Peace</u> International |
| MON 22 <u>Mabon</u> Neo-Pagan | MON-WED 22-24 <u>Rosh Hashanah (New Year)</u> Jewish | TUE 23 <u>International Day of Sign Languages</u> International | TUE 30 <u>National Day for Truth and Reconciliation/ Orange Shirt Day</u> Canadian |

Notes:

1. This day is celebrated in Costa Rica, El Salvador, Guatemala, Honduras, and Nicaragua.

*Holy days begin at sunset of the date listed and go to sunset of the following day.

^ Work restrictions.

OCTOBER 2025

LGBTQ+ History | National Disability Employment Awareness
Filipino American History | Global Diversity Awareness Month



WED-THU
1-2

**Yom
Kippur**



Jewish
Day of Fasting

THU
2

**Dussehra/
Vijayadashami**

Hindu



MON-MON
6-13

**Sukkot
(Feast of
Tabernacles)**



Jewish

SAT
11

**National
Coming Out
Day**

United States

MON
13

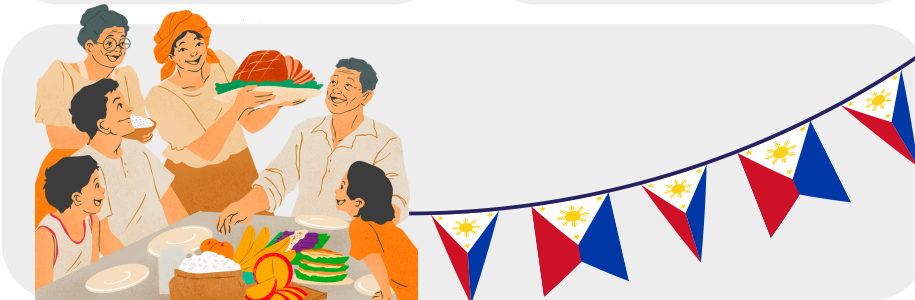
**Canadian
Thanksgiving**

Canada

MON
13

**Indigenous
Peoples' Day**

United States



MON-WED
13-15

**Shemini
Atzeret**

Jewish



Notes:

*Holy days begin at sunset of the date listed and go to sunset of the following day.

^ Work restrictions.

OCTOBER 2025

LGBTQ+ History | National Disability Employment Awareness
Filipino American History | Global Diversity Awareness Month



TUE-WED
14-15

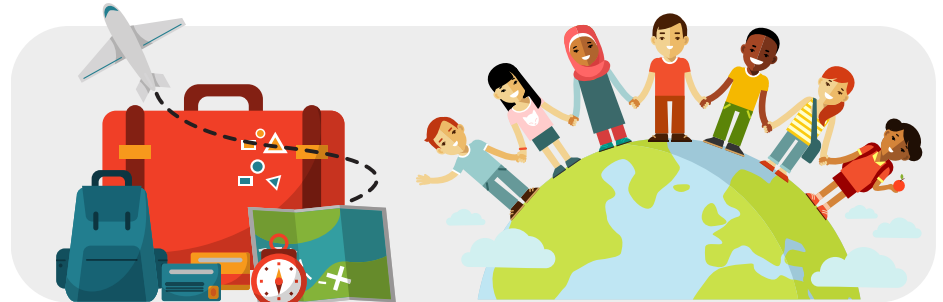
*^
Simchat
Torah

Jewish

MON-TUE
20-21

Diwali

Hindu, Jain,
Sikh, Buddhist



WED
22

*^
Birth of
the Báb

Bahá'i

THU
23

*^
Birth of
Bahá'u'lláh

Bahá'i

TUE
28

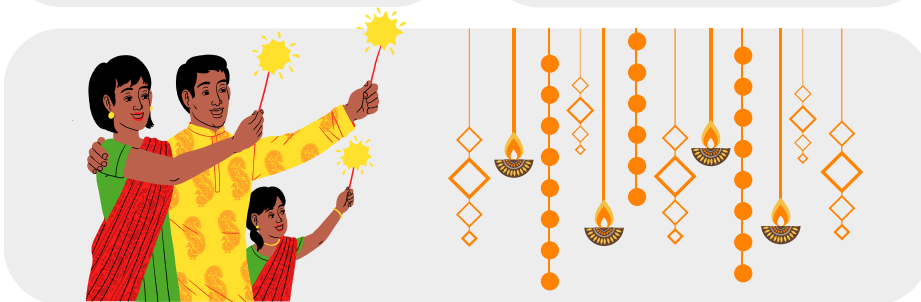
National
Immigrants
Day

United States

FRI
31

Halloween¹

United States



FRI-SAT
31-1

Samhain²

Neo-Pagan



Notes:

1. Be mindful of costumes. Read our blog about this [here](#).

2. Samhain is from October 31 to November 1.

*Holy days begin at sunset of the date listed and go to sunset of the following day.

^ Work restrictions.

NOVEMBER 2025

Native American and Indigenous Heritage Month



FRI-SAT
31-1

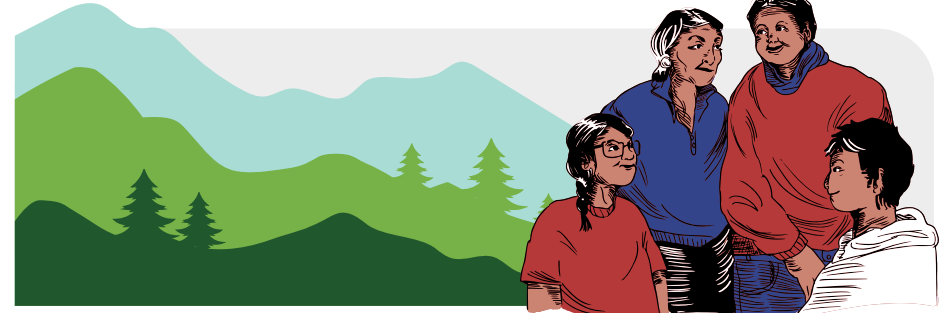
Samhain¹

Neo-Pagan

SAT
1

All Saint's Day

Anglican &
Roman Catholic



SAT-SUN
1-2

Día de los Muertos²

Mexican,
Latin American

WED
5

Birthday of Guru Nanak

Sikh

TUE
11

Veteran's Day

United States
No School

THU
27

Thanksgiving Day

United States
No School



FRI
28

Day of Mourning

United States
No School



Notes:

1. Samhain is from October 31 to November 1.
2. Celebrated in Latin America including Guatemala, Ecuador, El Salvador.

DECEMBER 2025

Universal Human Rights Month



MON
8

Feast of the Immaculate Conception

Catholic

MON
8

Bodhi Day (Rohatsu)

Buddhist

FRI
12

Day of Our Lady of Guadalupe

Mexican Catholic



SUN-MON
14-22

*
Hanukkah (Chanukah)

Jewish

TUE-WED
16-24

Simbang Gabi

Filipino Catholic

TUE-WED
16-24

Las Posadas¹

Latin American

SUN
21

Yaldā Night

Persian



SUN
21

Winter Solstice/ Yule

Neo-Pagan

THU
25

Christmas Day

Christian
No School

FRI-THU
26-1

Kwanzaa²

African American

Notes:

1. Las Posadas is celebrated in El Salvador, Mexico, Guatemala, and Honduras on varying dates.

2. Kwanzaa is from December 26 to January 1.

*Holy days begin at sunset of the date listed and go to sunset of the following day.

JANUARY 2026




**FRI-THU
26-1** Kwanzaa¹

African American

**THU
1** New Year's Day

International
No school

**THU
1** Gantan-sai 

Shinto



**TUE
6** Dia de los Reyes (Three Kings Day/Epiphany)

Latin American
Christian

**WED
7** Orthodox Christmas


Christian
Orthodox

**MON
19** Martin Luther King Day

United States
No School

**TUE
20** National Day of Racial Healing

United States

**TUE
20** Birthday of Guru Gobind Singh 

Sikh

**TUE
27** Holocaust Remembrance Day

International



Notes:

1. Kwanzaa is from December 26 to January 1.

^ Work restrictions.

FEBRUARY 2026

African American History Month



| | | | |
|--|--|---|---|
| SUN 1 <u>National Freedom Day</u> United States | SUN 1 <u>Imbolc</u> Neo-Pagan | TUE 3 <u>Setsubun-sai</u> Shinto | |
| SAT 14 <u>Valentine's Day</u> ¹ International | MON 16 <u>President's Day</u> United States No School | SUN-MON 15-16 <u>Maha Shivaratri</u> * Hindu | TUE 17 <u>Lunar New Year/Tết</u> ² Asian |
| TUE-THU 17-19 * ^ <u>Ramadan</u> ³ Islamic | WED-THU 18-2 <u>Lenten Season</u> ⁴ Christian | THU 19 <u>Day of Remembrance (Japanese Incarceration)</u> United States | FRI 20 <u>World Day of Justice</u> International |






Notes:

1. Be mindful that not all students observe this holiday.
 2. Lunar New Year is celebrated in China, Korea, Malaysia, Philippines, Indonesia, Singapore, Brunei, and Vietnam (Tết).
 3. Ramadan is from February 17 to March 19.
 4. Lenten Season is from February 18 to April 2.
- *Holy days begin at sunset of the date listed and go to sunset of the following day.
^ Work restrictions.

MARCH 2026

Women's History Month | Developmental Disabilities Awareness Month



| | | | |
|---|---|--|---|
| <div>TUE-THU 17-19</div> <div> <u>Ramadan</u>¹</div> <div>Islamic</div> | <div>WED-THU 18-2</div> <div><u>Lenten</u>² <u>Season</u></div> <div>Christian</div> | <div>TUE-WED 3-4</div> <div> <u>Holi</u></div> <div>Hindu</div> |  |
| <div>MON-TUE 2-3</div> <div> <u>Purim</u></div> <div>Jewish</div> | <div>TUE 3</div> <div><u>Magha</u> <u>Puja Day</u></div> <div>Buddhist</div> | <div>WED 4</div> <div><u>Equal Pay Day</u>.²</div> <div>United States</div> | <div>SUN 8</div> <div><u>International</u> <u>Women's Day</u></div> <div>International</div> |
|  | <div>MON 16</div> <div><u>Laylat</u> <u>al-Qadr</u></div> <div>Islamic</div> | <div>TUE 17</div> <div><u>St. Patrick's</u> <u>Day</u></div> <div>Irish</div> | <div>THU-FRI 19-20</div> <div> <u>Eid al-Fitr</u> (End of <u>Ramadan</u>)</div> <div>Islamic</div> |

Notes:

1. Ramadan is from February 17 to March 19.
 2. Lenten Season is from February 18 to April 2.
 3. Equal Pay Day is a projected date and is subject to change.
- *Holy days begin at sunset of the date listed and go to sunset of the following day.
^ Work restrictions.

MARCH 2026

Women's History Month | Developmental Disabilities Awareness Month



THU-FRI
19-27 Chaitra Navratri *

Hindu

FRI
20 Nowruz (Persian New Year)

Persian, Iranian

FRI
20 Ostara

Neo-Pagan



FRI-SAT
20-21 Naw-Rúz (Bahá'í New Year) *

Bahá'í

SAT
21 International Day for the Elimination of Racial Discrimination

International

WED
25 International Day of Remembrance of the Victims of Slavery and the Transatlantic Slave Trade

International

THU
26 Rama Navami

Hindu

SUN
29 Palm Sunday

Christian / Orthodox

SUN-SUN
29-5 Holy¹ Week

Christian

TUE
31 César Chávez Day

United States

TUE
31 International Transgender Day of Visibility

International

Notes:

1. Holy Week is March 29 to April 5.

*Holy days begin at sunset of the date listed and go to sunset of the following day.

APRIL 2026

Autism Acceptance Month | Arab American Heritage Month
Celebrate Diversity Month



WED-THU
18-2 Lenten¹
Season
Christian

SUN-SUN
29-5 Holy²
Week
Christian

WED-THU
1-9 * ^ Passover
(Pesach)
Jewish



THU
2 World Autism
Awareness
Day
International

THU
2 Maundy
Thursday
Christian

FRI
3 Good Friday
Christian

SUN
5 Easter
Christian



MON
6 National
Tartan Day
Scottish American

FRI
10 National Day
of Silence
United States

Notes:

1. Lenten Season is from February 18 to April 2.

2. Holy Week is March 29 to April 5.

*Holy days begin at sunset of the date listed and go to sunset of the following day.

^ Work restrictions.

APRIL 2026

Autism Acceptance Month | Arab American Heritage Month
Celebrate Diversity Month



FRI
10 Orthodox
Good Friday

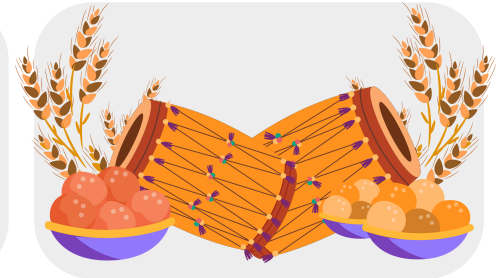
Christian
Orthodox

SUN
12 Orthodox
Easter

Christian
Orthodox

TUE
14 Vaisakhi

Sikh



MON-TUE
13-14 Yom
HaSho'ah *

Jewish

TUE-THU
14-16 Cambodian
New Year

Cambodian

TUE-THU
14-16 Bun Pi Mai
(New Year) *

Laotian

MON-TUE
20-21 First Day
of Ridván *

Bahá'i



WED
22 Earth Day

International

TUE-WED
28-29 Ninth Day
of Ridván *

Bahá'i



Notes:

*Holy days begin at sunset of the date listed and go to sunset of the following day.

MAY 2026

Asian American, Native Hawaiian and Pacific Islander Heritage Month



FRI
1

Beltane

Neo-Pagan



FRI
1

Buddha Day/
Visakha Puja/
Vesek

Buddhist



FRI
1

May Day
(International
Worker's Day)

International

FRI-SAT
1-2

Twelfth Day
of Ridván¹

Bahá'i



TUE
5

Cinco de
Mayo

United States /
Mexican

TUE
5

National Day of
Awareness for
Missing & Murdered
Indigenous Women,
Girls, & 2-Spirit

United States



SUN
10

El Día
de la Madre

Mexico, El Salvador
Guatemala

SUN
10

Mother's Day

United States






Notes:

*Holy days begin at sunset of the date listed and go to sunset of the following day.

MAY 2026

Asian American, Native Hawaiian and Pacific Islander Heritage Month



| | | | | | | | |
|---|--|--|---------------------------------|--|---|---|---|
| THU 21 | <u>World Day for Cultural Diversity</u> International | THU-SAT 21-23 | * ^ <u>Shavuot</u> Jewish | SAT-SUN 23-24 | * <u>Declaration of the Báb</u> Bahá'i |  | |
| SUN 24 | <u>Pentecost</u> Christian | SUN-FRI 24-29 | * <u>Hajj</u> Islamic | MON 25 | <u>Memorial Day</u> United States/ Mexican No School | TUE-WED 26-27 | * <u>Eid-ul-Adha (Feast of Sacrifice)</u> Islamic |
|  | THU-FRI 28-29 | * <u>Ascension of Bahá'u'lláh</u> Bahá'i | SUN 31 | <u>Haitian Mother's Day</u> Haitian |  | | |


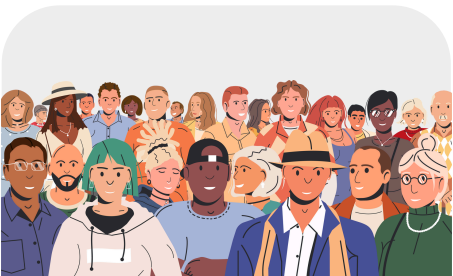

Notes:

- *Holy days begin at sunset of the date listed and go to sunset of the following day.
- ^ Work restrictions.

JUNE 2026

**LGBTQ+ Pride Month | National Immigrant Heritage Month
Caribbean American Heritage Month**



| | | | |
|--|---|---|---|
| <div>FRI 12</div> <div><u>Philippine Independence Day</u></div> <div>Filipino</div> | <div>FRI 12</div> <div><u>Loving Day</u></div> <div>United States</div> | <div>SUN 14</div> <div><u>Race Unity Day</u></div> <div>Bahá'í / United States</div> |  |
| <div>SUN 14</div> <div><u>Día de los Niños</u>¹</div> <div>Latin American</div> | <div>TUE-TUE 16-14</div> <div><u>Muharram (Al Hijrah New Year)</u>² *</div> <div>Islamic</div> | <div>FRI 19</div> <div><u>Juneteenth</u></div> <div>United States</div> | <div>SAT 20</div> <div><u>World Refugee Day</u></div> <div>International</div> |
|  | <div>SUN 21</div> <div><u>Summer Solstice/Litha</u></div> <div>Neo-Pagan</div> | <div>SUN 28</div> <div><u>International LGBTQ+ Pride Day</u></div> <div>International</div> |  |

Notes:

1. Día de los Niños is celebrated in many Latin American countries including Mexico, Colombia, Chile, Argentina, Bolivia, and Ecuador.

2. Muharram/Al-Hijra is from June 16 to July 14.

*Holy days begin at sunset of the date listed and go to sunset of the following day.

JULY 2026

Disability Pride Month | BIPOC Mental Health Month



TUE-TUE
16-14

Muharram *
(Al Hijrah
New Year) ¹

Islamic

THU
2

**17th of
Tammuz**

Jewish

FRI
3

**Black Hair
Independence
Day (Crown Day)**

United States



SAT
4

**Independence
Day**

United States

FRI
10

**Martyrdom
of the Báb** ^

Bahá'í

FRI
10

**Black Women's
Equal Pay Day** ²

United States

TUE
14

**International
Non-Binary
People's Day**

International



THU
23

**Birthday
of Haile
Selassie**

Rastafarian

SUN
26

**National
Disability
Independence
Day**

International

WED
29

**Dharma
Day**

Buddhist

Notes:

1. Muharram/Al-Hijra is from June 16 to July 14.

2. Black Women's Equal Pay Day is a projected date and may change.

*Holy days begin at sunset of the date listed and go to sunset of the following day.

^ Work restrictions.